



— SAARTHAK - KALARAJ —

ATHENA

Unique 3 BHK Imperial Homes

Treat yourself
Royally



Shree Rajendrasoori Gurubhyo Namah
With the Blessings of Late Leherabai & Tarachandji Porwal



— SAARTHAK - KALARAJ —
ATHENA

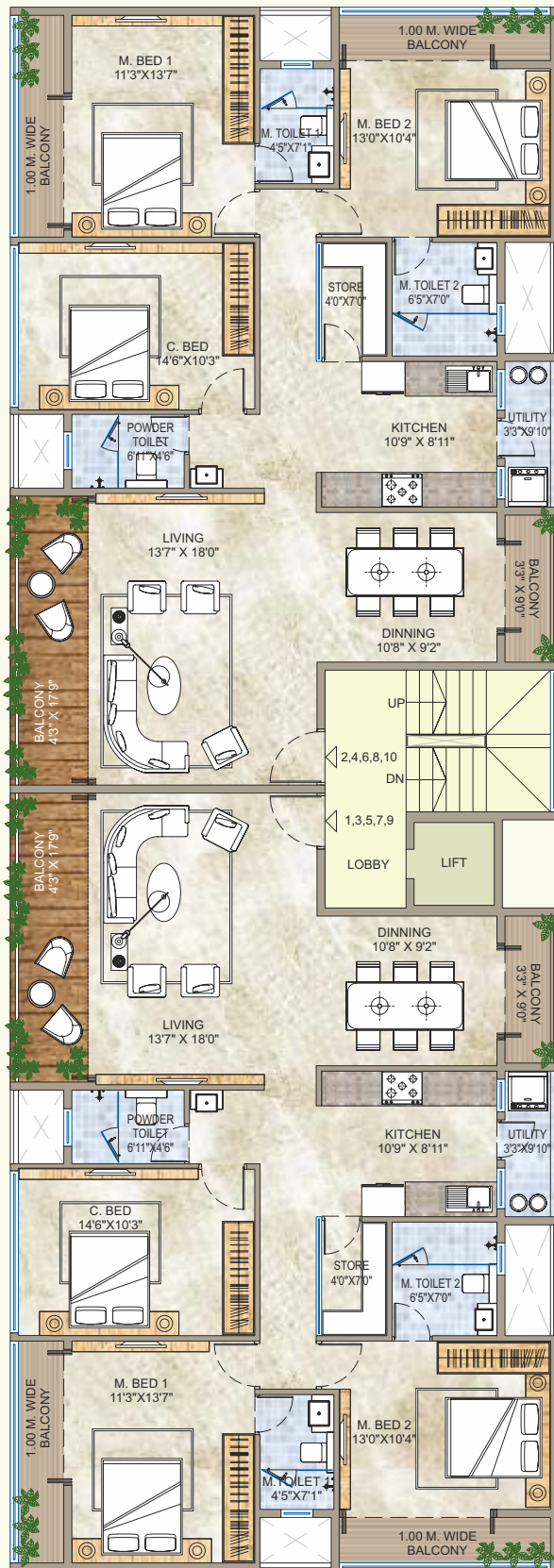
BIGGER SPACE,
MORE AESTHETIC.

Give yourself the space and coziness you need to live an aspired life. The elite 3 BHK Apartments at Athena come with spacious and gorgeously designed three bedrooms, a living room and a kitchen. A top choice for families looking for a touch of exclusivity and hit the perfect sweet spot in terms of space, features and amenities.

A home, there emerges a picture of a spacious place with ample sunlight where every season has its own charm. Leisure, space and happiness adorned with a host of modernistic comforts and conveniences for all those royal minds who want to spend blissful moments in the lap of luxury.



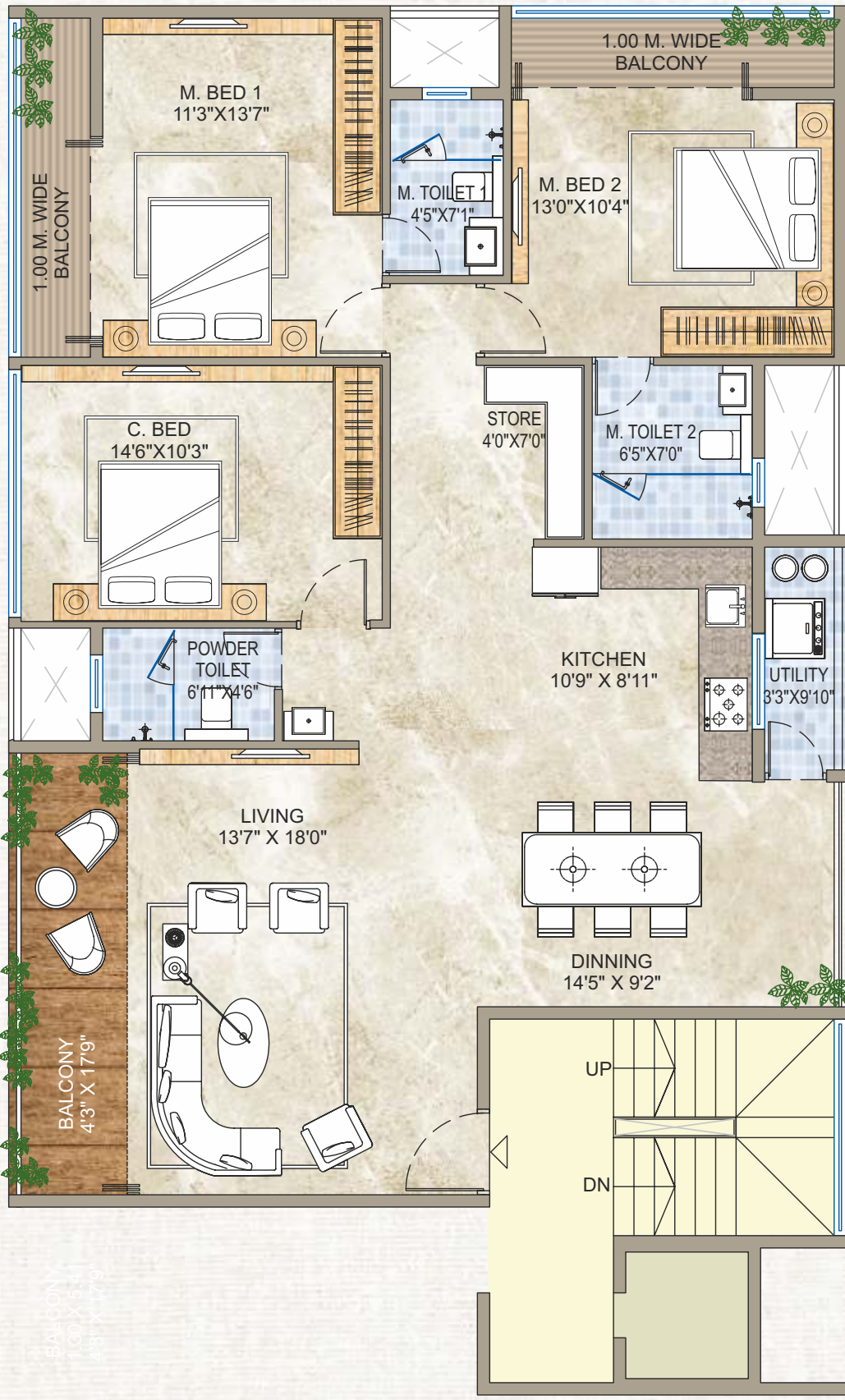
----- PROPOSED 9.00M WIDE ROAD -----



----- PROPOSED 9.00M WIDE ROAD -----



TYPICAL 1ST TO 5TH FLOOR PLAN



BALCONY
 1.00 X 5.41
 4.8" X 17.9"





PROJECT HALLMARKS

- Pollution free modern location of Serene Meadows
- Magnificent G+5 storey apartment
- Elegant entrance lobby
- Automatic elevator
- Power back up for elevator & common lighting
- Intercom facility & CCTV surveillance
- Biometric security
- Rain water harvesting
- Allotted car parking & 2 wheeler parking with Electric charging point
- Proper water-proofing system for terrace and balconies
- Multipurpose designed top terrace with provision for meetings /get together
- Terrace with artificial lawn

STRUCTURE-

- Seismic and termite resistant RCC frame structure
- External walls 6" thick & Internal walls 4.5" thick

PLASTERING-

- Sand faced double coat external plaster with Acrylic Apex paint.
- Internal walls with Gypsum plaster and OBD paint.

FLOORING-

- Vitrified 1 mtr *1 mtr flooring in Living Room, Bedrooms & Kitchen
- Ceramic finish Tiles in all the Balconies

KITCHEN-

- Granite kitchen platforms with stainless steel sink and glazed tiles up to lintel level
- Concealed gas piping from utility to the kitchen platform

UTILITY-

- Washing machine point
- Granite counter with SS sink for washing utensils

WASHROOMS-

- Granite stone frames
- Antiskid flooring tiles & glazed wall tiles till lintel level

- Branded CP fittings and sanitary ware
- Provision for exhaust fan and geyser
- Pest prevention traps
- Stop cock for each bathroom

DOORS & WINDOWS-

- Main doors will have Video Door Phone.
- All the doors will have attractive fittings and Latch locks
- Pre-pressed doors with plywood frames & designer laminates
- Bathroom doors with waterproof laminate from inside
- Granite for window sills
- Anodized 3 track aluminum sliding windows with mosquito net
- All windows with safety MS grill

ELECTRIFICATION-

- Extensive electrical layout in the entire flat
- Concealed copper wiring with ISI mark branded modular switches.
- Inverter wiring



— SAARTHAK - KALARAJ —

ATHENA



Home.

A special place it is,
to every heart and each being.

Athena is located at Nashik's best liveable and peaceful
place Serene Meadows; surrounded with full of
greenery, healthy environment and well-planned locality.

It enjoys proximity to malls, schools, colleges, banks,
hospitals, every daily needs and many more...

Developers :



We at Saarthak aspire to upgrade lives. Innovators in the business of homes and infrastructure of several residential, commercial, retail and township projects, we are backed by a strong presence in Nashik city for more than 20 years. Now upgrade its legacy of offering supreme residential spaces to hundreds of families. We are one of the leading construction houses in Nashik.

Office : 2, Liberty Point, Racca Colony, Sharanpur, Nashik. Call : 0253-2315533
Santosh Patil : 92255 35045 Hrishikesh Summanwar : 98225 03031
E-mail : saarthaknashik@gmail.com Visit us : www.sarthakconstructions.com

Owners :



KRP FINCON is a recent venture of KalaRaj Group in the field of construction & development. This Mumbai based group which commenced its journey in 1974 with equipment manufacturing for oil, gas, pharma, food, cement, fertilizer & carbon black industries of eminent industries of Private & PSU Sector, over the years, forayed into National Level awardwinning Architectural Projects, Interior Designing & many turn-key projects winning National awards. Project management, Finance-cum-fund, Fitness & Health Management and Fine Arts are some of the other fields.

1002, Limona, Runwal Anthurium, LBS Marg, Mulund (W), Mumbai 400080
Mob : 9619551616 E-mail : praj1411@gmail.com

Principal Architect
Ar. Sanjay Porwal

Architect
Ar. Sumit & Bansri Kumath

RCC Consultant
Er. Yogin Kulkarni

Legal Advisor
Adv. S. L. Deshpande

MAHARERA No. P51600034765



KRP FINCON is a venture of KalaRaj Group



Sarthak Constructions is a venture of Liberty Group

Note : The Developers reserve the right to change plans, specifications and features without prior notice or obligation, at their sole discretion and subject to approval of Government authorities. Specifications, writeup, internal layouts, plans and pictures shown in this booklet are only indicative. All renderings, floor plans, pictures and maps are the artist's conceptions and not actual depictions of the building, its walls, roadways or landscaping.